

# eX210 Tech-Note

---

## 10.1" HMI, Capacitive Touchscreen, 2 Ethernet Ports, 1 CAN Port JMobile runtime

- 10.1" TFT color display, LED backlight
- 1280x800 pixels resolution, 16.7M colors
- Capacitive Multitouch
- 64-bit CPU, 1.6 GHz
- 2 Ethernet ports
- CAN Port
- JMobile Studio programming
- CORVINA Remote Connectivity - Option
- CODESYS Control - Option



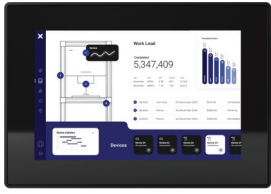
## Highlights

The HMIs of eX200 Series combine technical specification, features and performance that make them the ideal choice for edge devices where the requirements of applications in Industry 4.0 are the data control and the visualization.

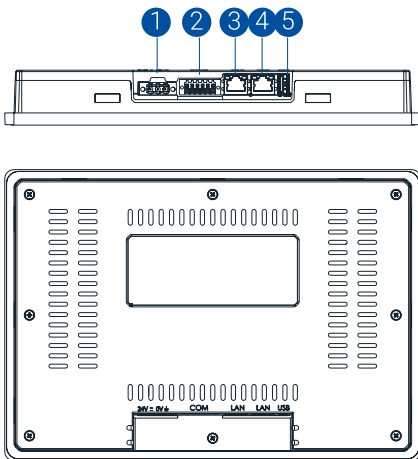
The pSLC configuration of the flash memory is a great choice for long life applications that will write substantial amount of data over the life of the product. The power of the 64 bit processing platform running Linux and state-of-the-art cybersecurity design make these products great players in modern applications.

eX200 products, running JMobile software, offer great integration options in enterprise networks and cloud communication. When used in combination with services by CORVINA, remote connectivity and smart data sharing are available for optimal performance in smart factory applications.

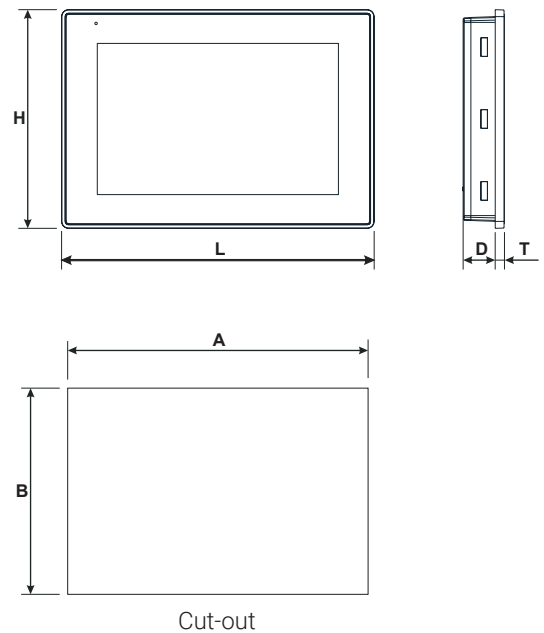
# eX210 Technical Data



| System Resources             |  |
|------------------------------|--|
| Display - Colors             | 10.1" - 16.7M  |
| Resolution                   | 1280x800   |
| Brightness                   | 400 Cd/m <sup>2</sup> typ.                               |
| Dimming                      | Yes  |
| Touchscreen                  | Projected Capacitive - Multitouch                        |
| CPU                          | 64-bit RISC quad core - 1.6GHz                           |
| Operating System             | Linux  |
| Flash                        | 4 GB (pSLC mode - High reliability)                      |
| RAM                          | 2 GB   |
| FRAM                         | 64 KB  |
| Real Time Clock              | Yes  |
| RTC Back-up                  | Supercapacitor   |
| Interface                    |  |
| Ethernet port                | 2 (10/100 Mbit)  |
| USB port                     | 1 (Host v. 2.0, max. 500 mA)                             |
| Serial port                  | 1 (RS-232, RS-485, RS-422, software configurable)        |
| CAN port                     | 1 (Isolated)   |
| Buzzer                       | Yes  |
| Indicator Light              | 1 (RGB LED)  |
| Ratings                      |  |
| Power supply                 | 24 Vdc (9 to 32 Vdc)                                     |
| Current Consumption          | 1.1A Max., Class 2                                       |
| Input Protection             | Electronic   |
| Environment Conditions       |  |
| Operating Temperature        | -20°C to +55°C (vertical installation)                   |
| Storage Temperature          | -30°C to +70°C   |
| Operating / Storage Humidity | 5-85% RH, non condensing                                 |
| Protection Class             | IP66 (front), IP20 (rear)                                |
| Dimensions and Weights       |  |
| Faceplate LxH                | 282x197 mm (11.10x7.76")                                 |
| Cutout AxB                   | 271x186 mm (10.67x7.32")                                 |
| Depth D+T                    | 29+8 mm (1.14+0.31")                                     |
| Weight                       | 1.3 Kg   |
| Approvals                    |  |
| CE                           | Electromagnetic Compatibility Directive 2014/30/EU (EMC) |
| UL                           | cULus: UL61010-1 / UL61010-2-201                         |
| RCM                          | Yes  |



- 1 Power Supply
- 2 Serial Port/CAN port
- 3 Ethernet Port
- 4 Ethernet Port
- 5 USB port (vers. 2.0-1.1)



## Ordering Information

| Model | Part Number     | Description  |
|-------|-----------------|--|
| eX210 | 101006200U-0004 | 10.1" HMI, Capacitive Touchscreen, 2 Ethernet Ports, 1 CAN Port, JMobile runtime |